

your hospitals your Pennine

Issue 3
Winter 2012

FOUNDATION TRUST MEMBERSHIP MAGAZINE

Welcome
to the 3rd
edition of the
Pennine Acute
Membership
Magazine



inside this issue
Happy New Year
& FT Update
Making the headlines
What's New?
Membership Events

welcome

Dear Member



HAPPY New Year and welcome to the third issue of our Foundation Trust membership magazine. I would like to welcome all our new members who have joined us since our last magazine was published in August.

Our membership continues to grow and we now have more than 6,500 public members and 9,500 staff members. We want to reach 10,000 public members by the summer of this year.

The end of a year and the beginning of a new one is a good time for us to reflect. Everything that we do from the ward to the Board is focused on providing high quality safe services and on making a real difference to our patients and our local communities.

Despite the financial challenges we, like other NHS Trusts, are facing, the staff at this

Trust continue to go that extra mile in striving to meet national targets, whilst at the same time maintaining high standards and improving the way we work in providing excellent care to patients.

This concerted effort by everyone across the Trust is demonstrated by the tangible results and good news we see in many areas, not only in our performance and patient safety reports but, more importantly, through the positive feedback and comments we receive from our patients and their families.

The recent figures published by the Dr Foster Hospital Guide 2011 have shown a dramatic fall in our hospital mortality rate. This has been achieved by sustained improvement in clinical practice and patient safety across a whole variety of areas. We have not allowed for complacency in our efforts in continuing to reduce healthcare acquired infections such as MRSA and C Diff. This has been achieved through excellent hygiene and high standards of cleanliness and organisation on wards and departments across our hospitals.

Not only did our staff go the extra mile in 2011, they were closely supported by the Trust's army of volunteers of whom we are all immensely proud. They tirelessly give their time and energy supporting our services

and enhancing the quality of care we deliver to patients.

We are also indebted to all our charity fundraisers, both staff and public, for their unrelenting effort and fantastic support. Our 'In Your Hands Appeal' for our new women and children's facilities currently being built at The Royal Oldham Hospital, in particular, is benefiting from the generosity and fundraising efforts since it was launched in February 2011. So far we have been pledged just over half our £200,000 target figure. The new development will be completed by December 2012.

The year ahead will involve many challenges as we continue to develop our services and seek efficiencies. But I know that with the same determination and resilience, we will continue to achieve positive outcomes for our patients.

Finally, I would like to thank you once again for your continued interest and support of The Pennine Acute Hospitals NHS Trust and may I take this opportunity to wish you a healthy and peaceful 2012.

John Jesky
Chairman

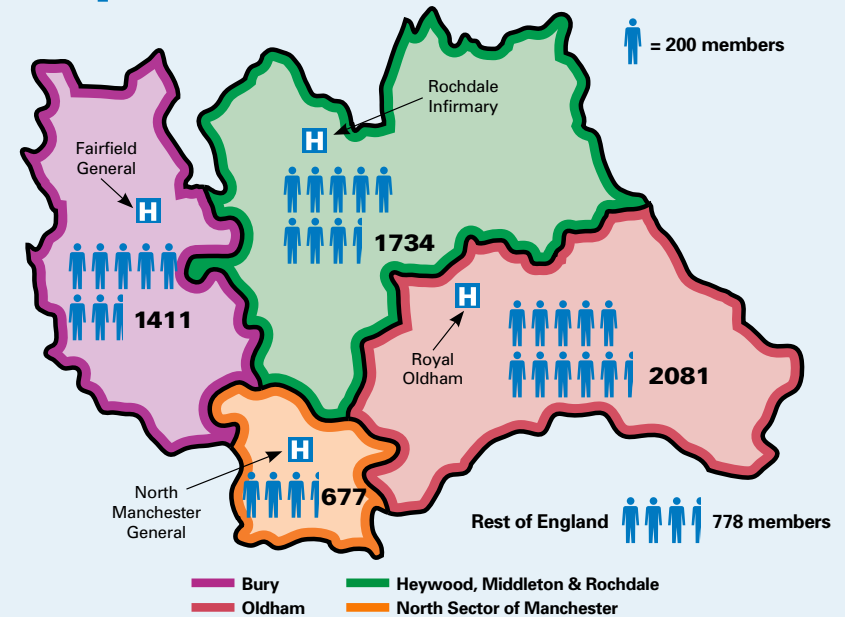
membership news

Membership

WE have recruited more than 6,500 public members in addition to our staff members since we consulted on our proposals to become a Foundation Trust. We are looking to recruit a further 3,500 new members by the summer of 2012. We are encouraging our members to sign up their friends and family too. The more members we have, the stronger your voice becomes in how your hospitals are run. Membership is free, with no obligation, and is open to anyone aged 14 and over. Members can also take advantage of discounts at a wide range of retailers through NHS Discounts.com.

For more information, or to register to become a member, visit our website or call 01706 517302.

Our public members



Your details

HAVE your details changed? Have you moved or changed your email address? If so, please let us know.

In addition to this magazine, we send emails roughly twice a month to our members about news and events. Please provide us with your email address (if you haven't already) if you are happy for us to contact you in this way. Emails also help us save money. Your personal details are strictly confidential and will not be shared with any third party.

Complete and return the freepost form on the back page or call 01706 517302 or email ft.membership@pat.nhs.uk

Governor Nominations

FOUNDATION Trusts are different because they are ultimately accountable to their members - local people and staff, through their Council of Governors.

Governors are people like you. In Autumn 2012 our public and staff members will elect a Council of Governors. Governors have statutory duties such as appointing the Chairman and Non-Executive Directors, and reviewing annual plans and reports. But they also have a vital role in helping guide how services are planned and delivered for local people and Trust staff.

- Do you have a keen and questioning mind?
- Can you represent your own views and the views of others?
- Can you make fair judgments on complex issues?
- If so, have you considered standing for election to become a Governor?

You do not need any special experience or qualifications to be a governor. You need to be enthusiastic, have a balanced judgment, and be willing to represent not just your own views but also the views of the people in your local community or staff group.

We will be setting up information sessions over the next few months for members interested in being a Governor. If you would like to register your interest in becoming a Governor, or wish to find out more, please contact us on 01706 517302 or email

ft.membership@pat.nhs.uk

Students sign up as members

THE Trust is stepping up its recruitment of young people to become members.

Recently fifteen students from North Chadderton High School in Oldham signed up following a visit by Angela Greenwood, Foundation Trust Membership Manager. The students received a presentation and watched our

Foundation Trust film (available on YouTube).

"It is important our public membership represents the communities we serve. This includes members from different backgrounds, ethnicity and age groups," said Angela. "The students at North Chadderton were very enthusiastic and many wanted to become involved in the Trust's work. Students were encouraged

to sign up as members so they could include their Foundation Trust membership on their C.V for future job opportunities and to play an active part in voicing their views and opinions to help influence the future of the Trust and their local NHS services. We are also pleased that many of our young members are keen to follow us on Twitter."



What is at my local hospital?

North Manchester General

- A&E Department
- Critical Care Unit
- MAU (Medical Admissions Unit)
- General Surgery
- Breast Surgery
- Day Surgery
- Orthopaedic/trauma Surgery
- Rheumatology
- Palliative Care
- Diabetes
- Renal
- Sexual Health
- Cardiology
- Gynaecology
- Respiratory
- Stroke
- Infectious Diseases
- Rehabilitation & Care of the Elderly
- X-ray, MR & CT scans
- Anaesthetic & Pain
- Out-Patients (including blood tests)
- Oral Surgery
- Maxillo-facial
- ENT
- Urology
- Maternity
- Children's Unit
- Neonatal
- Carers Centre
- Macmillan support centre
- Antenatal clinic
- Neuro physiology dept
- Programmed Investigation Unit (PIU)
- Antenatal Day Unit (ANDU)
- Community services
- Pathology

Fairfield General Hospital

- A&E Department
- Critical Care Unit
- MAU (Medical Admissions Unit)
- General Surgery – 23hour
- Orthopaedic Surgery
- Rheumatology
- Palliative Care
- Diabetes
- Renal
- Sexual Health
- Cardiology
- Respiratory
- Stroke
- Rehabilitation & Care of the Elderly
- Anaesthetic & Pain
- X-ray & CT scans
- Out-Patients (including blood tests)
- Oral Surgery
- ENT
- Ophthalmology
- Urology
- Maternity
- Antenatal clinic
- Childrens Unit
- Programmed Investigation Unit (PIU)
- Antenatal Day Unit (ANDU)
- Neonatal Unit

Rochdale Infirmary & Birch Hill

- Urgent Care Centre
- CAU (Clinical Assessment Unit)
- PIU (Programmed Investigation Unit)
- Rheumatology
- Day Surgery
- Renal
- Sexual Health
- X-ray, MR & CT scans
- Out-Patients (including blood tests)
- Anaesthetic & Pain
- Ophthalmology
- Silver Heart unit
- Cardiology
- Out-Patients
- Antenatal clinic
- Cath Lab
- Antenatal day unit
- Palliative care
- Floyd Unit (Neurology rehab)
- Antenatal Clinic
- Oral Surgery
- Urology outpatients

The Royal Oldham Hospital

- A&E Department
- Critical Care Unit
- General Surgery
- Orthopaedic Surgery
- Vascular Surgery
- MAU (Medical Admissions Unit)
- General Surgery
- Rheumatology
- Palliative Care
- Diabetes
- Gynaecology
- Renal
- Sexual Health
- Cardiology
- Respiratory
- Stroke
- Rehabilitation & Care of the Elderly
- Pathology
- X-ray, MR & CT scans
- Ophthalmology
- Anaesthetic & Pain
- Out-Patients (including blood tests)
- Urology
- Maternity
- Antenatal clinic
- Neonatal
- Children's Unit
- Antenatal day unit
- Haematology
- The Christie (radiotherapy)
- Victoria Breast Unit
- Antenatal Day Unit (ANDU)

The majority of Outpatient Services are provided on many, if not all, of our hospital sites. Some patients may have their outpatient appointment and consultation close to home, but if surgery is needed they may need to attend a different site.

More women choose to have a baby at NMGH

THE Trust has recently welcomed 43 staff from Salford Royal NHS Foundation Trust's maternity team.

As part of the 'Making it Better' redesign of maternity and children's services across Greater Manchester, Salford Royal's maternity unit closed to inpatient admissions for pregnant women in November. All routine antenatal and postnatal care will remain at the hospital, but maternity and neonatal care has been transferred to North Manchester General Hospital, The Royal Bolton and Saint Mary's Hospital. Midwife Joanne McNally said:

"The team at Salford Royal were used to providing a good and effective dedicated service to women and their families and we will continue to do that at our new hospitals. It will be nice to welcome Salford women to North Manchester General Hospital when they are due to give birth and also meet the women from the local communities there."

In June 2010 we opened our new £32m purpose-built women and children's unit for the care of pregnant women, babies and children at North Manchester General Hospital. The new facilities and new equipment offer patients high quality care in

a modern, bright, 21st century setting.

The building includes a co-located midwife-led birth centre with private rooms and two birthing pools. Edna Smith, Clinical Manager of the delivery suite and supervisor of midwives at the hospital, said: "The new unit serves the local community and beyond and provides a service to be proud of. We have a modern purpose built unit with facilities of high standard, bright airy rooms with en suite facilities. I hope that women choosing to have their babies with us find the unit welcoming and a place they can be proud of to give birth in."

Specialist Urology Services

THE Trust has opened a new male ward and has centralised planned urology inpatient surgical services at North Manchester General Hospital.

All inpatient urology services moved to the hospital in November as part of Healthy Futures. The service changes aim to improve patient access to onsite medical cover and the specialist urology nurse team. Patients who require an inpatient hospital stay will now be treated at North Manchester in a specialist facility comprising

three inpatient wards.

The new 18-bed male ward on C6 will treat elective patients (patients planned for surgery). Ward C5, an 18 bed male ward, will become a non-elective ward (patients without planned admission e.g. from A&E, GPs and outpatient



Alice 93 praises enhanced recovery treatment

A NEW enhanced recovery programme for patients recovering from elective colorectal surgery has received high praise from a 93-year-old patient.

Alice Parmley underwent major bowel surgery at The Royal Oldham in July last year and found that the service really helped her to recover quickly and leave hospital much sooner.

The programme involves input from a variety of specialist healthcare staff including ward staff, pain nurses, high dependency unit, theatres,

pre-operative staff, dieticians and occupational therapists.

Enhanced recovery focuses on each stage of the patient's journey including pre-operative counselling, less invasive surgery techniques and new approaches to the management of fluids and diet. Early mobilisation is also key to the programme.

Alice would normally have expected to spend over 14 days in hospital, but instead was ready to go home in 10 days. Other patients have gone home as early as four days post major bowel surgery.

She said: "I feel fantastic and the staff are angels. I feel much better than I expected to as I thought that I would spend days in bed feeling groggy."



clinics). The female ward on C3 will treat both elective and non-elective patients with 13 beds for Urology and 5 beds for Breast care.

Urology is one of the most varied branches of surgery. Urology Services provided by the Trust have seven consultants and teams of nurses who specialise in a range of urology conditions including disease of the bladder, kidney or prostate, kidney stones, continence, erectile dysfunction, impotence, infertility, incontinence, and cancer.

There will be no changes to

outpatient clinics, diagnostics and day case services. Outpatient clinics and diagnostic tests will still be available at each site at Rochdale Infirmary, Fairfield General Hospital, The Royal Oldham Hospital and North Manchester.

As part of the service changes, The Royal Oldham Hospital has invested in two new high-tech bladder scanners which will provide a higher level intervention for patients without the need for immediate urology review at another hospital. The scanners will be based in the A&E department and the day case unit.

Annette German, Urology Lead Nurse at The Pennine Acute Trust, said: "By concentrating the expertise of the medical staff on one hospital site it will provide a better service with a more consolidated approach to the care of patients especially with the production of specific pathways for their care. The Urology nurse specialist team will also be able to provide a greater input on the wards especially for the newly diagnosed cancer patients who are undergoing surgery."

Royal College President commends new integrated teams

STAFF at The Royal Oldham Hospital welcomed the President of the Royal College of Obstetricians and Gynaecologists during a recent visit.

Dr Anthony Falconer asked the Trust to host a gathering of North West Royal College fellows and members as he was particularly interested to visit the site of the Trust's new £44m Women and Children's Unit which is currently being built and is due to open in December this year and to hear more about the service.

Once complete, The Royal Oldham Hospital will be one of three regional centres providing the highest level of intensive care to the smallest and most vulnerable babies. The hospital

will provide the modern facilities, staff and skills required to care for the most complex cases. Parents of small and vulnerable babies to the north of the city will no longer have to travel as far to access the highest level of care. It is expected that the new children's and maternity service will see around 5,300 births and treat approximately 8,000 children a year from the Oldham, Rochdale and adjacent districts.

The recent transfer of inpatient maternity and children's services from Rochdale Infirmary to The Royal Oldham Hospital, as part of Making it Better, has seen services relocated to newly refurbished and expanded wards and facilities at The Royal Oldham Hospital. This includes a brand new Paediatric Observation and Assessment

Unit (POAU) for poorly children and young people.

On visiting the new wards Dr Falconer said: "Transferring the maternity service from Rochdale to Oldham ahead of the new development opening will also allow doctors and nurses to build their teams and integrate their procedures and processes in preparation for a smooth transition into the building. It also means that by creating a single larger team of doctors. The Royal Oldham Hospital has been able to increase the number of hours of consultant presence on the delivery suite to 102 hours per week, which is now one of the highest in the country. This means a very high standard of care can be provided to women and babies in the new Oldham centre."

Pictured: Left to right: Mr Zul Anjum, Consultant Obstetrician and Gynaecologist, Pennine Acute Trust, Dr Mourad Seif, Royal College of Obstetricians and Gynaecologists Advisor for the North West Region, Dr Anthony Falconer, President of The Royal College of Obstetricians and Gynaecologists and Mr Olubusola Amu, Consultant Obstetrician & Gynaecologist and Clinical Director for Obstetrics and Gynaecology at Pennine Acute Trust.



New services praised

ROCHDALE Infirmary recently opened its doors to local councillors and community groups to meet staff and patients in the new Urgent Care Centre (UCC) and Clinical Assessment Unit.

The event was organised by doctors, nurses, community staff and GPs who work in the new facilities which opened in April last year.

Those who attended included local councillors and representatives from the Partnership for Older People, Rochdale Carers, Rochdale Voices4Wellbeing, and the Bangladesh Association and Community Project.

The Deputy Mayoress of Rochdale Council, Cllr Jane Gartside, also attended. She said: "The event has been a necessary exercise I think to help the Trust convey the changes that have taken place at Rochdale Infirmary. During my visit, the patients I have met all appreciate the care and treatment that is provided here. I'm very impressed. It confirms the excellent work provided by the staff who have super knowledge, good training and work extremely hard."

The UCC opened in April to replace the former A&E department. It is open 24 hours a day, 365 days a year and run by experienced nurses, nurse practitioners and a GP. The UCC can treat non life-threatening



walk-in injuries and ailments, which don't require an A&E department, but cannot wait for a GP or on-call doctor's appointment. Since opening, the UCC (up until December) has treated over 36,000 patients with minor injuries.

The new overnight and short stay Clinical Assessment Unit (CAU) for adults opened at the same time as the UCC. The 12-bed unit provides rapid patient assessment and treats patients who have been referred directly from their local GP, from the community, or come via the urgent care centre. Patients are assessed, observed and treated on the clinical assessment unit usually up to a maximum of 48 hours.

In August the Leader of Rochdale Council praised the staff and the new services

following his visit to the Infirmary.

Cllr Colin Lambert was joined by Cllr Jean Hornby, Chair of the Council's Health Overview and Scrutiny Committee, and Cllr Linda Robinson, Cabinet Member for health, adult care and housing.

He said: "We are absolutely delighted to have been invited to visit staff and patients at the UCC and CAU and amazed at these first class facilities that remain at Rochdale Infirmary. The skill, professionalism and dedication of individual staff here is outstanding. This is not a hospital which is closed, this is a hospital that has been part of vital changes to the delivery of our life-saving NHS of which, when the true story is known, we can be proud."

New Ante-Natal Day Unit

PREGNANT women in Bury who require closer monitoring during their pregnancy, but are well enough to avoid an overnight stay in hospital, can now be seen in Fairfield General's new antenatal day unit (ANDU).

Catherine Cairns, a midwife who has been caring for local women and babies for 25 years, has provided her expertise to lead the new service which opened in September.

The ANDU will remain in place at Fairfield General Hospital after the Making it Better changes, which are going ahead in March 2012, are complete.

The changes will mean that from March, the option to give birth will no longer be available at the hospital, with overnight maternity services transferring to North Manchester General and The Royal Bolton Hospitals, but all routine antenatal and postnatal care will remain at Fairfield General Hospital.

The ANDU will play a vital role in ensuring that women with more complex health needs are closely monitored, whilst limiting the need for them to travel to hospitals outside the area for appointments.

Catherine Cairns, midwife at

Fairfield, said: "The new ANDU offers pregnant women in Bury at a facility where they can be monitored for longer than is possible in the community without necessarily being admitted to hospital. It means that we can carry out procedures in order to assess the well-being of mother and baby, such as monitoring blood pressure over a couple of hours, performing blood tests and recording the baby's heart rate. At the end of their short stay women can go home reassured that they have been properly checked out with appropriate management plans in place."



".....TO PROVIDE THE VERY BEST CARE FOR EACH PATIENT ON EVERY OCCASION....."

making the headlines

Cannabis-based medicine for cancer pain

THE Trust has won a global race and signed up the first patient for a worldwide commercial study looking at the use of a cannabis-based medicine for pain management in advanced cancer patients.

The study is part of the SPRAY III research programme, which is being sponsored by GW Pharmaceuticals. SPRAY III is looking at the use of Sativex® for patients who have not obtained adequate pain relief from opioid therapy.

To date, the Trust is the lead hospital trust in the world for the SPRAY III programme, with 12 patients recruited. It is hoped that another 32 will join the group over the next two years.

Sativex® is a medicine derived from the cannabis plant. The medicine is delivered by an oromucosal spray (sprayed into the mouth either onto the inside of the cheek or under the tongue). Sativex® is already available on prescription in the UK as a treatment for spasticity due to Multiple Sclerosis.

The study will hopefully

show a quantifiable and demonstrable improvement in the pain and suffering of all palliative cancer patients, along with academic recognition for the Trust.

Dr Iain Lawrie, Consultant and Honorary Clinical Senior Lecturer in Palliative Medicine at North Manchester General Hospital, said: "This study is an exciting development in the field of cancer pain management. Initial clinical observations suggest that Sativex® will have an important role to play in this complex area of palliative care."

Positive report from the CQC

OUR hospitals have received another positive report in its latest inspections by the independent healthcare regulator, the Care Quality Commission.

All Trusts routinely receive a series of planned reviews and unannounced visits by CQC inspectors during the year. The CQC carried out an unannounced visit to the Trust in September. This included visits to the Trust's A&E Departments at North Manchester and Fairfield General Hospitals, The Royal Oldham Hospital and to the Urgent Care Centre and Clinical Assessment Unit at Rochdale Infirmary.

During the visit, the CQC inspectors checked records and spoke with patients, relatives and staff. The CQC

found all sites to be again meeting all essential standards of quality and safety. The CQC previously visited in January 2011.

Marian Carroll, Director of Nursing, welcomed the latest CQC report and said:

"We welcome the CQC's findings and are pleased with its report. We are successfully treating thousands of patients every week. Our emergency departments, in particular, are very busy places within our hospitals. Last year we saw 310,688 A&E cases. A&E and 999 services are for life-threatening and serious conditions. Despite the daily pressures faced by our staff, we continue to focus on providing the very highest standards of care and in ensuring that our patients are

seen and treated as quickly as possible.

"This report by the CQC is a testament to the hard work, skill and commitment of all our staff who strive to provide the very best care for our patients. In addition to the inspections by the CQC and the regular ward visits by our Board members, it is important that we continue to seek the views of patients, relatives and staff on an ongoing basis to help us to look at where we are performing well and where we can make further improvements.

"We will not be complacent. We shall build on this positive feedback from the CQC. This is excellent news for the Trust and our staff should be congratulated."

Hospital mortality rate falls

THE Trust has experienced a dramatic fall in its hospital mortality rate across its hospitals following efforts to further improve patient safety.

Figures published in the Dr Foster Hospital Guide (November 2011) show that the Trust's Hospital Standardised Mortality Ratio (HSMR) has fallen again over the last year and is now below 100, meaning fewer patients died than would be expected.

HSMR enables the comparison of mortality rates between hospitals. This prediction takes account of factors such as the age and sex of patients, their primary diagnosis and complicating factors, and their length of stay in hospital. Standardisation of mortality rates allows comparison between different hospitals serving different communities.

If a Trust has an HSMR of 100,



this means that the number of patients who died is exactly as would be expected. A Trust's HSMR above 100 means that more patients died than would be expected; below 100 means that fewer patients than expected died. The Trust's reported HSMR figure is 99.6, compared with the figure of 110.4 as reported last year.

Dr Sally Bradley, the Trust's new Medical Director, said: "We are committed to improving patient safety and we aim to

have no avoidable deaths and no avoidable harm across all our hospitals and services.

"Mortality across our hospitals has decreased every year since 2005. By any indicator, including Dr Foster and CHKS which we use, we have shown a huge improvement, particularly over the last two years.

"This represents delivery of care with fewer than expected deaths across our hospitals. Sustained effort by our staff to improve clinical practice and patient safety across a whole variety of areas has led to this reduction.

"Although this is a complex area, and whilst there are differences in the way mortality is calculated, the important factor here is that all the indicators show that mortality is reducing and we continue to focus our attention on ensuring our services are safe for our patients."

Unnecessary A&E visits wasting NHS resources

UNNECESSARY visits to A&E are wasting valuable NHS resources and could mean some patients having to wait longer to be treated.

Figures suggest around one in four people who visit the A&E departments at the Trust could be treated more quickly and more appropriately by a pharmacist, a walk in centre or their GP.

The Trust is currently seeing on average 30 patients per day at North Manchester General A&E and 20 patients per day at The Royal Oldham Hospital A&E who could and should be dealt with in a primary care service.

A&E teams are routinely being faced with having to deal with 'run-of-the-mill' minor cases such as coughs and colds, backache and upset stomachs. Other cases include patients with small

insect bites, small cuts to fingers, diarrhoea and minor stomach irritations, and long-term back pain.

Dr Jimmy Stuart, clinical director for A&E at North Manchester General said: "We often find ourselves dealing with patients who turn up to A&E with minor illness and complaints who could have been seen and treated at another health service. Some patients don't even need any form of medical intervention.

Not only are these unnecessary visits to A&E a drain on valuable and limited resources, but these patients will usually be low priority and this means they will be waiting longer than most others

and could be treated more quickly elsewhere.

"By choosing and using the right services, patients can expect to be seen or treated more quickly, whilst keeping emergency services free for those patients with serious and life threatening illnesses."

Patients are urged to consider the full range of NHS services available to them by visiting online at www.nhs.uk or for telephone advice call NHS Direct 084546 47.



In your hands appeal

OUR 'In Your Hands Appeal' has been pledged a staggering £120,000 in just ten months, since it was launched in February, in support of the new women and children's facilities currently being built at The Royal Oldham Hospital.

The Appeal aims to raise £200,000 in total by December 2012 for when the building opens.

So far, an Oldham father is the top individual fundraiser, raising

an amazing £1,500 after completing a cycle ride from Lands End to John O'Groats on a second-hand bike.

Andrew Urbaniak from Lees in Oldham was inspired to raise money for the new purpose-built £44m facility, following the birth of their twins last year.

Jacob and twin sister Maisie, were born eleven weeks early at The Royal Oldham Hospital on 30th November 2010. Jacob weighed just 2lb 13oz and Maisie 1lb 10oz. Maisie was very

poorly and sadly passed away not long after she was born. Jacob spent the next two months in hospital being cared for by the neonatal staff.

Most cyclists take ten to fourteen days to complete the challenge. Andrew finished the 900 mile distance in just 12 days on a second-hand bike he bought from a jumble sale, costing £10.

Andrew said: "We didn't really know much about the neonatal unit until our twins were born there. Sadly Maisie died when

she two days old, and if it wasn't for the staff at Oldham, Jacob would also not be with us now.

"You never think that anything will go wrong with the birth of your children and so I felt that it was so important to recognise and raise awareness of the fantastic work that the staff carry out. Jacob is now thriving and celebrated his first birthday in November.

"The bike ride was tough going. I can honestly say I have put the bike to bed for a while now though! I would like to thank everyone who has

sponsored me to help the hospital carry on giving fantastic care."

The money raised will help buy medical equipment for the new facility which is due to open in December.

To find out more about how you can help raise money for the In Your Hands Appeal, or to make a donation, go online to www.pat.nhs.uk/inyourhands, or call 0161 918 4497, or you can text: HAND12 to 70070



Membership Events

All sessions are free and open to all members, but we do ask that you reserve your place by emailing, Angela Greenwood, FT Membership Manager ft.membership@pat.nhs.uk or calling Angela on 01706 517302. Please let us know if you have any special requirements.

Date	Time	Subject	Venue/Location
16th Jan 2012	10am - 6pm	Car Parking Policy Review – drop-in information events	The Gallery Restaurant North Manchester General
17th Jan 2012	10am - 6pm		The Atrium (above the Main Entrance) Rochdale Infirmary
18th Jan 2012	10am - 3pm		The Broad Oak Suite Fairfield General Hospital
19th Jan 2012	10am - 6pm		The Education Centre The Royal Oldham Hospital
23rd Jan 2012	2 - 4 pm	'New Year – New You' – come along and have your blood pressure, BMI and cholesterol checked, there will be advice and information on various topics including stopping smoking and watching your weight.	The Café Royal & Link Bridge, The Royal Oldham Hospital
24th Jan 2012	2 - 3 pm 7 - 8 pm	Rheumatology Hub - Presentation by Dr Neil Snowden about planned changes to inpatient Rheumatology services and the creation of a new Rheumatology service at Rochdale Infirmary	Afternoon & Evening – presentations at the Education Centre, Rochdale Infirmary
1st Feb 2012	2 - 4 pm	'Behind the Scenes' – Pathology Tour – Len Fielding, Directorate Manager will be providing a 'whistle stop tour' of the pathology department.	Pathology Department, The Royal Oldham Hospital
8th Feb 2012	2 - 4 pm	Car Parking Policy Review – a 'drop-in session' and a chance to have your say on the proposed changes to the Trust's Car Parking Policy.	The Gallery Restaurant, North Manchester General Hospital
28th Feb 2012	2 - 3 pm	Diabetes Medicine Presentation Dr Susannah Rowles, Consultant specialising in Diabetes, will be presenting a talk on diabetes that affects more than 2.8 million people in the UK.	Lecture Theatre, Fairfield General Hospital

your feedback

Tell us what you want

Over the past 3 months we have held a number of FT member events. These have included our winter flu event in September and the 'Superbugs' presentation in November. We are keen to arrange future events that are of interest to our members. We would welcome any comments or ideas from you. Contact the membership office or email ft.membership@pat.nhs.uk

".....TO PROVIDE THE VERY BEST CARE FOR EACH PATIENT ON EVERY OCCASION....."

your voice

Car Parking Policy - Survey

WE are proposing to make changes to our parking policy, which could see designated parking for staff, patients and visitors, and we want your views.

Currently the majority of parking at our hospital sites is available for all types of user. This raises issues on differing needs and requirements. Also, staff parking demands impact upon the availability of patient and visitor parking.

The Trust is carrying out a public and staff consultation into

three key proposed changes to policy. These are:

- The designation of parking areas within our hospital sites, establishing dedicated patient and visitor parking areas.
- Changes to the current method of charging for parking concessions, using vouchers or payment by phone for parking at a reduced price.
- Changes to parking enforcement on our hospital sites to encourage compliance with parking

rules and to improve existing signage. The Trust is also considering flexible methods for purchasing vehicle parking tickets, including telephone and online transaction methods. The survey runs until 20th January. For further information and to complete the web based survey go to <https://www.surveymonkey.com/s/patpq> or contact the FT membership office.

Changes to Services for heart and stroke patients

A series of information roadshows have been touring the North East of Greater Manchester over the past few months, encouraging the public to share their views about heart and stroke rehabilitation services.

A consultation exercise, led by Healthy Futures, started on 17th October 2011 focusing on proposals to change services for planned cardiology and stroke rehabilitation. Local public meetings have also been held, allowing the public to share their views about the proposals.

Final responses to the consultation are due by 28th

January 2012. More details and copies of the consultation document and questionnaire are

available at www.healthyfutures.nhs.uk or call 0161 655 7422 or email: healthy-futures@hmr.nhs.uk



Pictured: Stroke Unit at Fairfield General Hospital

**As a Foundation Trust member
you can now follow the Trust and our
news and events on Twitter**

@pennineacutenhs

twitter 

**Find
us on
YouTube**

You Tube 

your comments

Please write any comments you have here:

Foundation Trust membership

I am interested in becoming a
Foundation Trust member

Volunteering

I am interested in volunteering in
the Trust

The Pennine Acute Hospitals NHS Trust Charity

I am interested in raising funds or making a
donation to the Charity

For existing members - if your details have changed, or you are able to provide a mobile number or email address, please tick here and complete the form below with your details.

First Name **Last Name**

Address

House/number

Street

City

County

Post code

Telephone Mobile:

Email

Please return this page to: Freepost RSER-HGCC-LEES
Foundation Trust
Trust Headquarters
North Manchester General Hospital
Delaunays Road
Manchester
M8 5RB

The Pennine Acute Hospitals 
NHS Trust

**Useful
contacts**

Switchboard – 0161 624 0420

Volunteers Co-ordinator – 0161 604 5892

Trust Charity – 0161 918 4497 or charity@pat.nhs.uk

Foundation Trust Membership Office – 01706 517302 or email ft.membership@pat.nhs.uk